



RESIDENTIAL

SALES | LETTINGS | PROPERTY MANAGEMENT

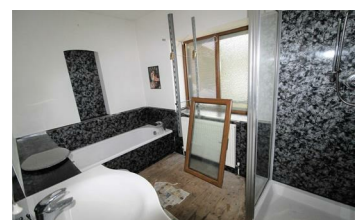


3 Bungalow, Huddersfield, HD7 5RH

Price £189,950



SOLD BY ADM RESIDENTIAL OF HUDDERSFIELD. PLEASE NOTE STRICTLY BY APPOINTMENT WITH THE AGENT ONLY - ANY FURTHER INFORMATION NEEDED MUST BE REQUESTED FROM THE AGENT ONLY***NOT TO BE MISSED *** "ATTENTION A DETACHED BUNGALOW". Set back off the main flow of traffic on this elevated position with OPEN ASPECT to the rear/side elevation. Located in a well regarded residential area of Linthwaite close to local shops and schools and bus routes." THIS PROPERTY IS OFFERED FOR SALE BY ADM RESIDENTIAL." A two bedroomed, detached Bungalow with gardens and ample off road parking, this spacious family sized accommodation boasts gas central heating, double glazing, with exposed ceilings, briefly comprises of:- Entrance door leading to a kitchen area which opens onto the dining room, spacious lounge with patio doors reading to the rear



- DETACHED BUNGALOW
- OPEN PLAN KITCHEN/DINING
- BEAUTIFUL VIEWS
- TWO BEDROOMS
- ATTIC SPACE
- GARDENS

55 Market Street, Milnsbridge, Huddersfield, HD3 4HZ
T: 01484 644555 | E: sales@admresidential.co.uk
www.admresidential.co.uk

